



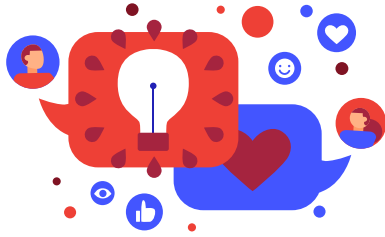
# CORE PRINCIPLES OF WEGRAPH3D CORPORATE CULTURE

## OUR MISSION

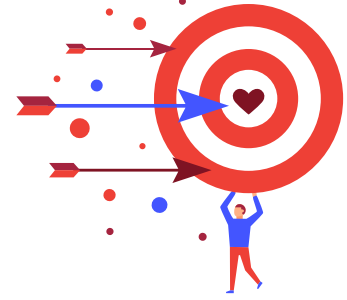
THROUGH OUR **VISUAL MARKETING SERVICES**,  
WE INSPIRE PEOPLE TO INVEST  
IN OUR CLIENTS' PROJECTS

WE ARE A COMPANY WITH UKRAINIAN ROOTS,  
AND WE ARE PROUD OF IT!

## CLIENT RELATIONSHIPS



## COMPANY GOALS



## INTERNAL RELATIONSHIPS



## INTERNAL EMPLOYEE PRINCIPLES



### CLIENT RELATIONSHIPS

We prioritize building strong relationships with our clients, based on mutual respect and trust.

### INTERNAL RELATIONSHIPS

We foster a collaborative and supportive environment within our team, where everyone works together toward common goals.

### COMPANY GOALS

Our aim is to become the most creative and effective company in our field. Our products and services should inspire and practically help our clients attract investments to their projects. **We strive to exceed our clients' expectations.**

### INTERNAL EMPLOYEE PRINCIPLES

We operate like **a sports team**, a community that unites different people with similar values. Each team member contributes to the overall result and takes full responsibility for their work. We always seek ways to improve and avoid making excuses for why something can't be done.

**Respect:** Respect is the fundamental principle in relationships between employees and with clients. Criticizing clients, even when they are wrong, is strictly prohibited.

**Openness and Honesty:** Transparency and honesty among employees are the foundation of our internal communication. We strive to speak the truth politely, considering each other's psychological and physical characteristics. Familiarity and profanity are not tolerated.

**WHO WE DON'T WORK WITH:** We do not work with clients who do not respect us, including fraudsters, alcohol companies, tobacco companies, meat industry companies, gambling companies, the pornography industry, companies from ruzzia, and toxic companies with bad reputations.

**Continuous Learning and Improvement:** We are committed to personal and professional development. Personal growth and professional skills are our focus

**Inspiring and Supporting Growth:** We inspire and help each other grow. WeGraph3D is a space where people become better in all aspects of life: physical, moral, emotional, and professional. Each employee prioritizes the development of positive character traits. WeGraph3D is a community of good people!

**Excellence in Work:** We do not work for mediocre results. We **put our hearts** into what we do. We **cultivate gratitude** towards our clients. Each client should feel special to us.

**Constructive Conflict Resolution:** Politics and quarrels have no place in our team. If problems or misunderstandings arise, we try to discuss them constructively (minimizing emotional background) directly with the person involved (if necessary, involving someone from management). We always pursue mediation. We **cherish a creative and peaceful atmosphere within our community**. WeGraph3D is not a place for people with inflated egos.

**Brand Ambassadors:** Every employee of WeGraph3D is an ambassador of the company brand, not just during working hours. It's important to remember that we represent the WeGraph3D community in society, and our behavior must reflect **the high moral and cultural standards** of our community.

**Full-time Commitment:** Full-time employees are prohibited from taking on side jobs or working on outside projects (except social, charitable, and other volunteer projects). WeGraph3D's relationship with employees is based on mutual loyalty.